

Performance Features

- Tested to meet Grade 1 specification of 1,000,000 cycles.
- Clutching mechanism standard.
- Thru-bolt design and heavy-duty spring tension provides longer performance life and prevents lever sag.
- ADA-compliant thumbturn.
- Mortise case is easily field reversible.
- Pre-assembled trims with spring-loaded spindles automatically adjust to door thickness and reduce installation time.
- Partial security separator prevents spindle manipulation.
- Anti-friction throwbolt.

Certifications



- ANSI/BHMA A156.13 – Grade 1
- UL/cUL listed (3 hours) for “A” label single-door applications (4' x 8') (1.219m x 2.438m)
- UL10C/UBC 7-2 (1997) Positive Pressure Rated
- UL10B Pressure Rated
- ADA-Compliant ANSI A117.1 Accessibility Code
- California State Reference Code (formerly Title 19 – Fire Marshal)

Product Specifications

- Template – 3 5/8" (92mm).
- Solid forged brass trim construction.
- Dual 8mm spindles.
- 1" (25.4mm) stainless steel deadbolt.
- Floating mounting tabs adjust to door bevel.
- Toggle button locking.
- Heavy gauge steel armor faceplate.
- Door thickness–Sectional: 1 3/4" - 2" (44.5mm-51mm) standard; (57mm) optional
–Escutcheon: 1 3/4" - 2 1/4" (44.5mm-57mm) standard

Keying

- 6-pin or 5-pin cylinders. Many keying options available from our factory to include, but not limited to, master keying, grand master keying, and construction keying.
- 2 keys per lockset.
- Offered with the following keyway options: BF-BEST "F" SFIC, KW-Kwikset, WE-Weiser, SC-Schlage, GA-Yale, LA-Sargent, & LG-Less Cylinder. Consult factory for other cylinder options.

Warranty

- Lifetime Mechanical, 3-year finish*, 1-year electrical

*(613/US10B carries no finish warranty)



Sectional Summit (M)



Escutcheon Sierra (E)



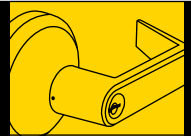
Escutcheon Slate (A)

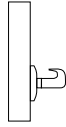
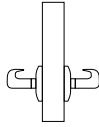
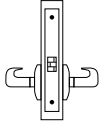
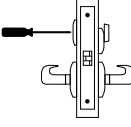
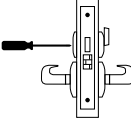
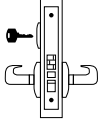
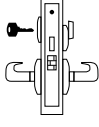
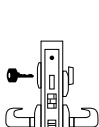
Functions

ANSI	Series	Description
—	QMS/QME120	Single Dummy
—	QMS/QME122	Full Dummy
F01	QMS/QME130	Passage
F22	QMS/QME140	Privacy
F19	QMS/QME145	Privacy w/ Deadbolt
F04	QMS/QME150	Entry
F13	QMS/QME152	Exit
F20	QMS/QME154	Corridor
F11	QMS/QME158	Dormitory
F05	QMS/QME160	Classroom
F32	QMS/QME162	Classroom Security
F09	QMS/QME164	Apartment
F07	QMS/QME170	Storeroom
F30	QMS/QME172	Institutional
F14	QMS/QME174	Store Door

Finishes

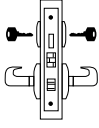
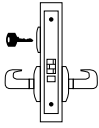
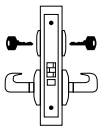
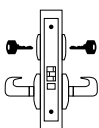
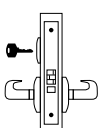
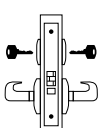
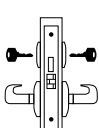
BHMA	US	Description
605	US3	Bright Brass
613	US10B	Oil Rubbed Bronze
619	US15	Satin Nickel
625	US26	Bright Chrome
626	US26D	Satin Chrome

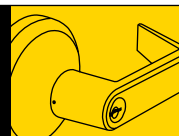


Functions	ANSI		Description	Latch Bolt	Deadbolt	Auxiliary	Toggle	Cylinders	Case Qty
QMS/ QME120 <i>Single Dummy</i>	—		Lever trim on one side (no mortise case).						4
QMS/ QME122 <i>Full Dummy</i>	—		Lever trim on both sides (no mortise case).						4
QMS/ QME130 <i>Passage</i>	F01		Latch bolt operated by lever from either side at all times.	X					4
QMS/ QME140 <i>Privacy</i>	F22		Latch bolt operated by lever from either side except when outside lever is locked by inside trim or button. Operating inside lever, closing door or operating outside emergency release (accessible under emergency cap) unlocks outside lever.	X					4
QMS/ QME145 <i>Privacy w/ Deadbolt</i>	F19		Latch bolt operated by lever from either side. Deadbolt operated by turn from inside and emergency release from outside (accessible under emergency cap). Operating inside lever retracts both bolts.	X	X				4
QMS/ QME150 <i>Entry</i>	F04		Latch bolt operated by lever from either side except when outside lever is made inoperative by toggle. When outside lever is locked, latch bolt is retracted by key from outside or by operating inside lever. Auxiliary dead latch deadlocks latch bolt.	X		X	X	Sgl	4
QMS/ QME152 <i>Exit</i>	F13		Latch bolt operated by lever from either side. Deadbolt is projected by key from outside and turn piece from inside. Operating inside lever retracts both bolts and unlocks outside.	X	X			Sgl	4
QMS/ QME154 <i>Corridor</i>	F20		Latch bolt operated by lever from either side, except when outside lever is made inoperative by toggle. Deadbolt operated by key outside or turn inside. Key outside operates both bolts. Operating inside lever retracts both bolts and outside remains locked. Latch bolt is deadlocked when outside lever is made inoperative or when the deadbolt is projected. When deadbolt is retracted, lever is unlocked by toggle.	X	X		X	Sgl	4

MECHANICAL LOCKS

QMS/QME 100 Series Grade 1 Heavy-Duty Mortise Locks

Functions	ANSI		Description	Latch Bolt	Deadbolt	Auxiliary	Toggle	Cylinders	Case Qty
QMS/ QME158 <i>Dormitory</i>	F11		Latch bolt operated by lever from either side except when outside lever is made inoperative by toggle. Deadbolt projected by key from either side. Deadbolt retracted by key from outside. Both bolts retracted by inside lever and outside remain locked.	X	X		X	Dbl	4
QMS/ QME160 <i>Classroom</i>	F05		Latch bolt operated by lever from either side except when outside lever is made inoperative by key from outside. Inside lever always operative. Auxiliary dead latch deadlocks latch bolt.	X		X		Sgl	4
QMS/ QME162 <i>Classroom Security</i>	F32		Latch bolt operated by lever from either side except when outside lever is locked from inside or outside by key. When outside lever is locked, latch bolt is retracted by key from inside or outside or by operating inside lever. Auxiliary dead latch deadlocks latch bolt.	X		X		Dbl	4
QMS/ QME164 <i>Apartment</i>	F09		Latch bolt operated by lever from either side, except when outside lever is locked by key from inside. When outside lever is locked, latch bolt is retracted by key from outside or by operating inside lever. Auxiliary dead latch deadlocks latch bolt.	X		X		Dbl	4
QMS/ QME170 <i>Storeroom</i>	F07		Latch bolt operated by key from outside or by operating inside lever. Outside lever is always inoperative. Auxiliary dead latch deadlocks latch bolt.	X		X		Sgl	4
QMS/ QME172 <i>Institutional</i>	F30		Latch bolt operated by key from either side. Both levers always inoperative. Auxiliary dead latch deadlocks latch bolt.	X		X		Dbl	4
QMS/ QME174 <i>Store Door</i>	F14		Latch bolt operated by lever from either side. Deadbolt operated by key from either side.	X	X			Dbl	4



20	Single Dummy
22	Full Dummy
30	Passage
40	Privacy
45	Privacy w/ Deadbolt
50	Entry
52	Exit
54	Corridor
58	Dormitory
60	Classroom
62	Classroom Security
64	Apartment
70	Storeroom
72	Institutional
74	Store Door

E	Sierra
M	Summit
A	Slate

KD	Keyed Different
KA	Keyed Alike
SK	Special Keying
	-Construction Keyed
	-Construction Master Keyed
	-Maison Keyed
	-Master Keyed
	-Grand Master Keyed
	-Great Grand Master Keyed
ZB	Zero Bitted

Base Part Number						
Series	Function	Design	Finish	Keyway	# of Pins	Keying
QME1	60	E	626	KW	6	KD

Escutcheon Trim	QME1
Sectional Trim	QMS1

605	Bright Brass
613	Oil Rubbed Bronze
619	Satin Nickel
625	Bright Chrome
626	Satin Chrome

BF	BEST "F" SFIC
KW	Kwikset "KW"
WE	Weiser "E"
SC	Schlage "C"
GA	Yale "GA"
LA	Sargent "LA"
LC	Less Cylinder

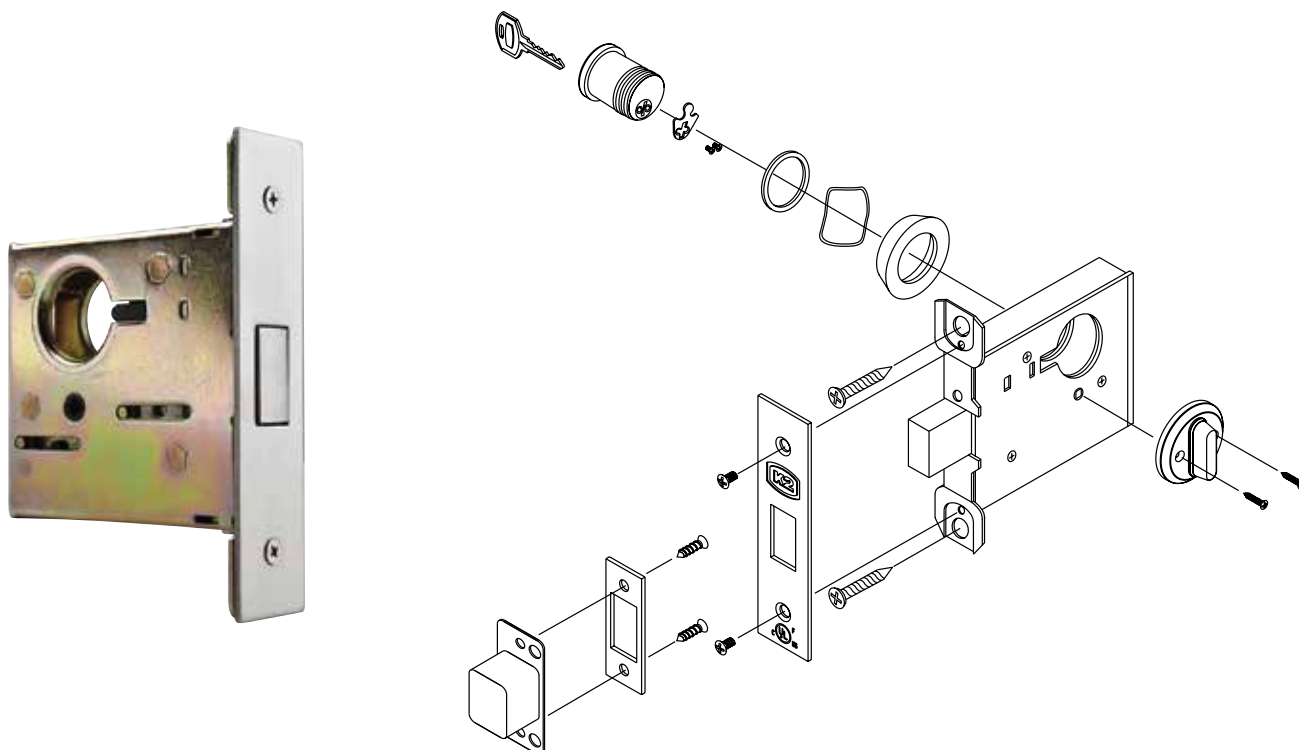
Example

If you ordered: QME160 E626 KW6 KD

You would get: Grade 1 Classroom Mortise Lock, Sierra Lever Escutcheon Trim, Satin Chrome, Kwikset Keyway, Keyed Different.

MECHANICAL LOCKS

QML 100 Series Grade 1 Heavy-Duty Mortise Deadlocks



Functions	ANSI		Description	Case Qty
QML180 <i>Single Cylinder</i>	E06071		Deadbolt operated by key from outside and by turn from inside.	10
QML182 <i>Double Cylinder</i>	E06061		Deadbolt operated by key from either side.	10
QML184 <i>Cylinder Only</i>	E06061		Deadbolt operated by key from one side only.	10
QML186 <i>Classroom*</i>	E06061		Deadbolt operated by key from outside. Turn on inside retracts but does not project the deadbolt.	10

NOTES:

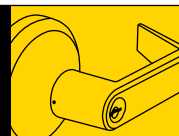
Consult factory for lead times on 605, 619 & 625 finishes.

*Classroom function requires handed cylinder turn. Specify handing when ordering.

How to Order

QML 100 Series Grade 1

Heavy-Duty Mortise Deadlocks



80	Single Cylinder
82	Double Cylinder
84	Cylinder Only
86	Classroom

KD	Keyed Different
KA	Keyed Alike
SK	Special Keying
	-Construction Keyed
	-Construction Master Keyed
	-Maison Keyed
	-Master Keyed
	-Grand Master Keyed
	-Great Grand Master Keyed
ZB	Zero Bitted

Base Part Number						
Series	Function	Finish	Handing*	Keyway	# of Pins	Keying
QML1	86	626	RH	KW	6	KD

605	Bright Brass
613	Oil Rubbed Bronze
619	Satin Nickel
625	Bright Chrome
626	Satin Chrome

BF	BEST "F" SFIC
KW	Kwikset "KW"
WE	Weiser "E"
SC	Schlage "C"
GA	Yale "GA"
LA	Sargent "LA"
LC	Less Cylinder

QML186 Only*	
RH	Right Hand
LH	Left Hand

Example

If you ordered: QML186 626 RH KW6 KD

You would get: Grade 1 Classroom Mortise Lock, Satin Chrome, Right-Hand, Kwikset Keyway, Keyed Different.

NOTES:

Consult factory for lead times on 605, 619 & 625 finishes.

*Classroom function requires handed cylinder turn. Specify handing when ordering.

Performance Features

- Tested to meet Grade 1 specification of 800,000 cycles.
- Standard clutching mechanism provides resistance to damage caused by physical force.
- Thru-bolt design and heavy-duty spring tension provides longer performance life and prevents lever sag.
- Concealed mounting screws.
- Compartmentalized packaging allows for quick and easy installation.

Certifications



- ANSI/BHMA A156.2 Series – Grade 1
- ANSI A117.1 Accessibility Code (ADA Compliant)
- UL/cUL Listed (3 hours) for "A" label single-door applications (4' x 8') (1.219m x 2.438m)
- UL10C/UBC 7-2 (1997) Positive Pressure Rated
- UL10B Pressure Rated
- California State Reference Code (formerly Title 19 – Fire Marshal)
- Hurricane Compliant – Miami-DADE N.O.A. See page 72 for more details.

Product Specifications

- Handing – All QCL100 Series Levers Locksets are non-handed.
- Door thickness – 1 3/8" - 2" (35mm-51mm) standard.
- Backset – 2 3/4" (70mm) square standard. 2 3/8" and 5" (60mm, 127mm) available.
- Exposed trim – Pressure cast zinc, plated to match finish designation.
- Strike – ANSI Strike 1 1/4" x 4 7/8" (32mm x 124mm) standard. Other strike options also available.
- Door prep – 2 1/8" (54mm) diameter cross bore.
- Latch bolt – Keyed/Exterior 1/2" (12.7mm) steel throw; Interior 1/2" (12.7mm) spring latch.
- Latch faceplate – 1 1/8" x 2 1/4" (29mm x 57mm) standard.
- Single dummy is surface mounted.
- Electrification options available.

Keying

- 6-pin non-IC brass cylinders. 6 or 7 pin SFIC option available. Many keying options available from our factory to include, but not limited to, master keying, grand master keying and construction keying.
- 2 keys per lockset.
- Offered with the following keyway options: BF-BEST "F" SFIC, KW-Kwikset, WE-Weiser, SC-Schlage, GA-Yale, LA-Sargent, & LC-Less Cylinder.

Warranty

- Lifetime Mechanical, 3-year finish*, and 1-year electrical

*(613/US10B carries no finish warranty)



Sierra (E)



Summit (M)



Slate (A)

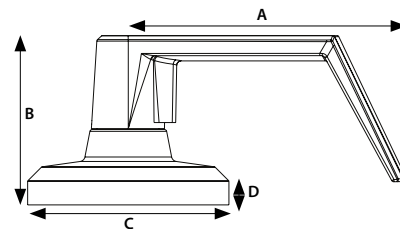
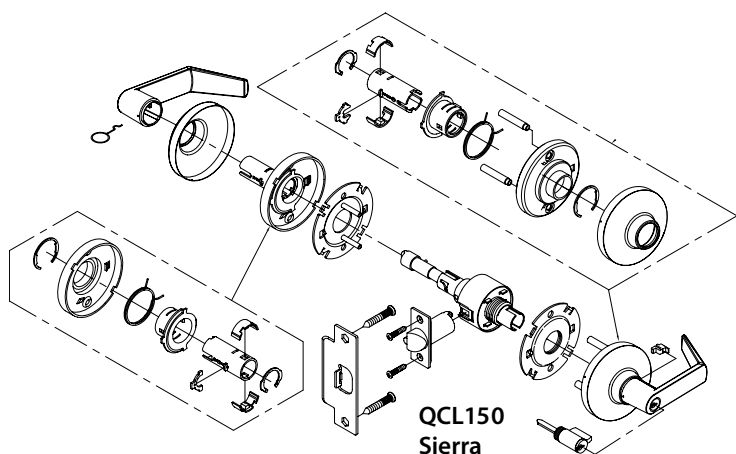
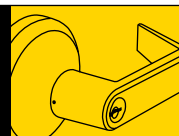
Functions

ANSI	Series	Description
—	QCL120	Single Dummy
F75	QCL130	Passage
F111	QCL135	Communicating
F76	QCL140	Privacy
F109	QCL150	Entry/Office
F109	QCL151	Entry/Office SFIC
F90	QCL154	Corridor
F90	QCL155	Corridor SFIC
F84	QCL160	Classroom
F84	QCL161	Classroom SFIC
F110	QCL168	Classroom Security
F110	QCL169	Classroom Security SFIC
F86	QCL170	Storeroom
F86	QCL171	Storeroom SFIC
—	QCL192	Electronically Locked
—	QCL193	Electronically Locked SFIC
—	QCL194	Electronically Unlocked
—	QCL195	Electronically Unlocked SFIC

Finishes

BHMA	Description
605	Bright Brass
613	Oil Rubbed Bronze
619	Satin Nickel
625	Bright Chrome
626	Satin Chrome

QCL
100 Series Grade 1
Heavy-Duty Cylindrical Locks



DIMENSIONS				
	A	B	C	D
Sierra	4.895"	2.985"	3.543"	.407"
	124.32mm	75.82mm	90mm	10.34mm
Summit	4.929"	3.034"	3.543"	.407"
	125.20mm	77.06mm	90mm	10.34mm
Slate	4.937"	2.993"	3.543"	.407"
	125.40mm	76mm	90mm	10.34mm

Functions	ANSI		Description	Case Qty
QCL120 <i>Single Dummy</i>	—		Dummy trim for one side of door. Used for door pull or as matching inactive trim. No mechanical operation. Surface-mounted single dummy trim.	12
QCL130 <i>Passage</i>	F75		Both levers always unlocked and always free for immediate ingress & egress.	6
QCL135 <i>Communicating</i>	F111		Blank plate outside. Inside lever always unlocked and always free.	6
QCL140 <i>Privacy</i>	F76		Push-button locking. Can be opened from outside with a small screwdriver. Turning inside lever or closing door releases button. Inside lever is always free for immediate egress. Clutch feature disengages outside lever from latch when locked to prevent vandalism.	6
QCL150/151 <i>Entry/Office</i>	F109		Turn/push-button locking; pushing and turning button locks outside lever, requiring use of key until button is manually unlocked. Push-button locking; pushing button locks outside lever until unlocked by key or by depressing inside lever. Clutch feature disengages outside lever from latch when locked to prevent vandalism. Inside lever is always free for immediate egress.	6
QCL154/155 <i>Corridor</i>	F90		Deadlocking latch bolt operates by lever from either side except when outside lever is locked by key in outside lever, or by push-button on inside. Key in outside lever locks or unlocks outside lever. Operating inside lever releases push-button. Closing door releases push-button. Inside lever always operates latch bolt.	6
QCL160/161 <i>Classroom</i>	F84		Key required to either lock or unlock outside lever. Inside lever is always unlocked and free for immediate egress. Clutch feature disengages outside lever from latch when locked to prevent vandalism.sdf	6
QCL168/169 <i>Classroom Security</i>	F110		Key in either lever required to lock or unlock outside lever. Inside lever is always unlocked for immediate egress.	6
QCL170/171 <i>Storeroom</i>	F86		Outside lever always locked. Entrance by key only. Inside lever unlocked and free for immediate egress. Clutch feature disengages outside lever from latch when locked to prevent vandalism.	6

Performance Features

- Tested to meet Grade 2 specification of 400,000 cycles.
- Standard clutching mechanism provides resistance to damage caused by physical force.
- Thru-bolt design and heavy-duty spring tension provides longer performance life and prevents lever sag.
- Concealed mounting screws.
- Compartmentalized packaging allows for quick and easy installation.

Certifications



- ANSI/BHMA A156.2 Series – Grade 2
- ANSI A117.1 Accessibility Code (ADA Compliant)
- UL/cUL Listed (3 hours) for “A” label single-door applications (4' x 8') (1,219m x 2,438m)
- UL10C/UBC 7-2 (1997) Positive Pressure Rated
- UL10B Pressure Rated
- California State Reference Code (formerly Title 19 – Fire Marshal)
- Hurricane Compliant – Miami-DADE N.O.A. See page 72 for more details.

Product Specifications

- Handing – All QCL200 Series Levers Locksets are non-handed.
- Door thickness – 1 3/8" - 2" (35mm-51mm) standard.
- Backset – 2 3/4" (70mm) square standard.
2 3/8" and 5" (60mm, 127mm) available.
- Exposed trim – Pressure cast zinc, plated to match finish designation.
- Strike – ANSI Strike 1 1/4" x 4 7/8" (32mm x 124mm) standard.
Other strike options also available.
- Door prep – 2 1/8" (54mm) diameter cross bore.
- Latch bolt – Keyed/Exterior 1/2" (12.7mm) steel throw;
Interior 1/2" (12.7mm) spring latch.
- Latch faceplate – 1 1/8" x 2 1/4" (29mm x 57 mm) standard.

Keying

- 6-pin non-IC brass cylinders. 6 or 7 pin SFIC option available. Many keying options available from our factory to include, but not limited to, master keying, grand master keying and construction keying.
- 2 keys per lockset.
- Offered with the following keyway options: BF-BEST "F" SFIC, KW-Kwikset, WE-Weiser, SC-Schlage, GA-Yale, LA-Sargent, & LC-Less Cylinder.
Consult factory for other cylinder options.

Warranty

- Lifetime Mechanical and 3-year finish*

*(613/US10B carries no finish warranty)



Sierra (E)



Summit (M)



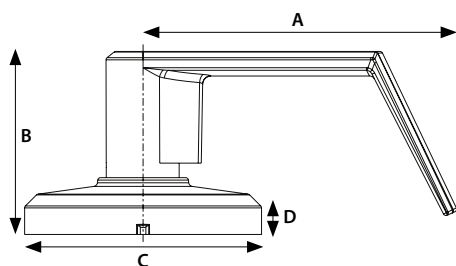
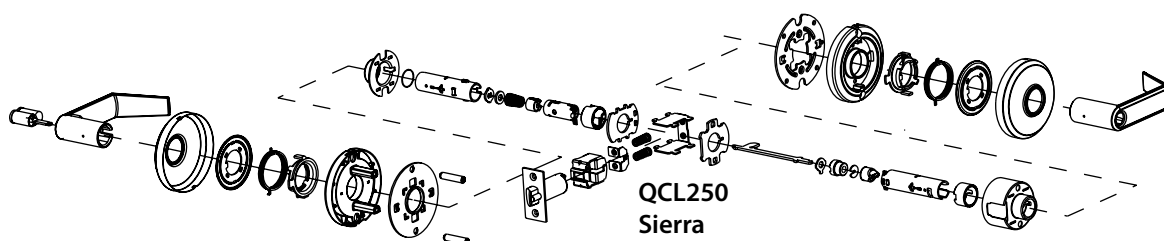
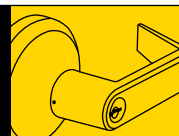
Slate (A)

Functions

ANSI	Series	Description
—	QCL220	Single Dummy
F75	QCL230	Passage
F111	QCL235	Communicating
F76	QCL240	Privacy
F109	QCL250	Entry/Office
F109	QCL251	Entry/Office SFIC
F90	QCL254	Corridor
F90	QCL255	Corridor SFIC
F84	QCL260	Classroom
F84	QCL261	Classroom SFIC
F86	QCL270	Storeroom
F86	QCL271	Storeroom SFIC

Finishes

BHMA	Description
605	Bright Brass
613	Oil Rubbed Bronze
619	Satin Nickel
625	Bright Chrome
626	Satin Chrome



DIMENSIONS				
	A	B	C	D
Sierra	4.451"	2.6"	3.366"	.269"
	113.06mm	66.04mm	85.50mm	6.84mm
Summit	4.533"	2.744"	3.366"	.269"
	115.14mm	69.70mm	85.50mm	6.84mm
Slate	4.535"	2.87"	3.366"	.269"
	115.20mm	72.90mm	85.50mm	6.84mm

Functions	ANSI		Description	Case Qty
QCL220 <i>Single Dummy</i>	—		Dummy trim for one side of door. Used for door pull or as matching inactive trim. No mechanical operation. Surface-mounted single dummy trim.	12
QCL230 <i>Passage</i>	F75		Both levers always unlocked and always free for immediate ingress & egress.	6
QCL235 <i>Communicating</i>	F111		Blank plate outside. Inside lever always unlocked and always free.	6
QCL240 <i>Privacy</i>	F76		Push-button locking. Can be opened from outside with a small screwdriver. Turning inside lever or closing door releases button. Inside lever is always free for immediate egress. Clutch feature disengages outside lever from latch when locked to prevent vandalism.	6
QCL250/251 <i>Entry/Office</i>	F109		Turn/push-button locking; pushing and turning button locks outside lever, requiring use of key until button is manually unlocked. Push-button locking; pushing button locks outside lever until unlocked by key or by depressing inside lever. Clutch feature disengages outside lever from latch when locked to prevent vandalism. Inside lever is always free for immediate egress.	6
QCL254/255 <i>Corridor</i>	F90		Deadlocking latch bolt operates by lever from either side except when outside lever is locked by key in outside lever or by push-button on inside. Key in outside lever locks or unlocks outside lever. Operating inside lever releases push-button. Closing door releases push-button. Inside lever always operates latch bolt.	6
QCL260/261 <i>Classroom</i>	F84		Key required to either lock or unlock outside lever. Inside lever is always unlocked and free for immediate egress. Clutch feature disengages outside lever from latch when locked to prevent vandalism.	6
QCL270/271 <i>Storeroom</i>	F86		Outside lever always locked. Entrance by key only. Inside lever unlocked and free for immediate egress. Clutch feature disengages outside lever from latch when locked to prevent vandalism.	6

MECHANICAL LOCKS

How to Order QCL 200 Series Grade 2 Standard-Duty Cylindrical Locks

20	Single Dummy
30	Passage
35	Communicating
40	Privacy
50	Entry/Office
51	Entry/Office SFIC
54	Corridor
55	Corridor SFIC
60	Classroom
61	Classroom SFIC
70	Storeroom
71	Storeroom SFIC

605	Bright Brass
613	Oil Rubbed Bronze
619	Satin Nickel
625	Bright Chrome
626	Satin Chrome

BF	BEST "F" SFIC
KW	Kwikset "KW"
WE	Weiser "E"
SC	Schlage "C"
GA	Yale "GA"
LA	Sargent "LA"
LC	Less Cylinder

Base Part Number								
Series	Function	Design	Finish	Latch	Strike	Keyway	# of Pins	Keying
QCL2	71	E	626	S4	478S	BF	6	KA

Additional Options	
Hurricane Compliant	2nd Finish
H	625

E	Sierra
M	Summit
A	Slate

478S	ANSI 4 7/8" x 1 1/4" Strike
118F	ANSI 1 1/8" x 2 1/4" Strike
FLS	Full Lip Square Corner Strike
FLR	Full Lip 1/4" Radius Corner Strike

613	Oil Rubbed Bronze
625	Bright Chrome

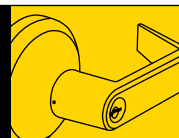
QCL2 LATCH TABLE (New)	
FR4	Fire-Rated Radius 2-3/4
FS4	Fire-Rated Square 2-3/4
NOL	No Latch
NR4	Narrow Radius 2-3/4
NR8	Narrow Radius 2-3/8
NS4	Narrow Square 2-3/4
NS8	Narrow Square 2-3/8
R4	Radius 2-3/4
R8	Radius 2-3/8
S3	Square 3-3/4
S4	Square 2-3/4
S5	Square 5
S8	Square 2-3/8

KD	Keyed Different
KA	Keyed Alike
SK	Special Keying
	-Construction Keyed
	-Construction Master Keyed
	-Maison Keyed
	-Master Keyed
	-Grand Master Keyed
	-Great Grand Master Keyed
ZB	Zero Bitted

Example

If you ordered: QCL271 E626 S4 478S BF6 KA H 625

You would get: Grade 2 Hurricane Compliant
Cylindrical Storeroom Lock, Sierra Lever, Satin
Chrome x Bright Chrome, 2 3/4" Deadlatch Square,
ANSI 4 7/8" x 1 1/4" Strike, SFIC "F" Keyway, Keyed Alike.



Applications

The QCI200 Series Interconnected Levers are designed for multi-family, assisted living, commercial & mixed-use applications where single motion egress is required. These levers deliver premium performance and are designed to withstand the physical abuses of the applied environment.

Performance Features

- Tested to meet Grade 2 specification of 400,000 cycles.
- Single-motion egress provides easy emergency exit.
- Full 1" (25mm) throwbolt with saw-resistant hardened steel roller pin.
- Anti-drill design deadbolt – two (2) ball bearings inserted to prevent drill attacks.
- ADA thumbturn.
- Tapered latch bolt to address warped door concerns.

Certifications



- ANSI/BHMA A156.12 – 1999 Grade 2
- UL/cUL Listed (3 hours) for "A" label single-door applications (4' x 8') (1.219m x 2.438m)
- UL10C/UBC 7-2 (1997) Positive Pressure Rated
- UL10B Pressure Rated
- ANSI A117.1 Accessibility Code (ADA Compliant)

Product Specifications

- Door range – 1 3/8" - 1 3/4" (35mm-44.5mm).
- Heavy-duty cylindrical lock body.
- 4" center-to-center.
- Backset – 2 3/4" (70 mm) standard. 2 3/8" (60mm) available.
- Exposed trim – Wrought brass or bronze with cast zinc lever.
- Strikes – "T" strike 1 1/8" x 2 3/4" standard for lever, deadbolt strike 1 1/8" x 2 3/4" standard. Other strike options also available.
- Latch bolt – Keyed 1/2" (13mm) steel throw with auxiliary latch, passage 1/2" (13mm) spring latch.
- Handing – All QCI200 locksets are non-handed.
- Standard door prep: 2 1/8" cross bore (54mm).
- Latch hole – 1" diameter edge bore.
- Rose diameter – 2 1/2" (63mm).
- Inside escutcheon – 3" x 8" (82.5mm x 203mm).
- Optional exterior escutcheon – 3 1/4" x 8" (82.5mm x 203mm).

Keying

- 6-pin non-IC brass cylinders. 6 or 7 pin SFIC option available. Many keying options available from our factory to include, but not limited to, master keying, grand master keying and construction keying. Small format interchangeable core cylinder also available.
- 2 keys per lockset.
- Offered with the following keyway options: SMT-SmartKey, KW-Kwikset, WE-Weiser, SC-Schlage, GA-Yale, LA-Sargent, BF-BEST "F" SFIC, & LC-Less Cylinder.

Warranty

- Lifetime Mechanical, 3-year finish* and 1-year electrical



Sierra (E) – Single-Locking



Summit (M) – Double-Locking



Slate (A) – Indicator

Functions

ANSI	Series	Description
F95	QCI230	Single-Locking (Passage Lever)
F95	QCI231	Single-Locking SFIC (Passage Lever)
F97	QCI250	Double-Locking (Entry Lever)
F97	QCI251	Double-Locking SFIC (Entry Lever)
—	QCI285	Indicator (Passage Lever)

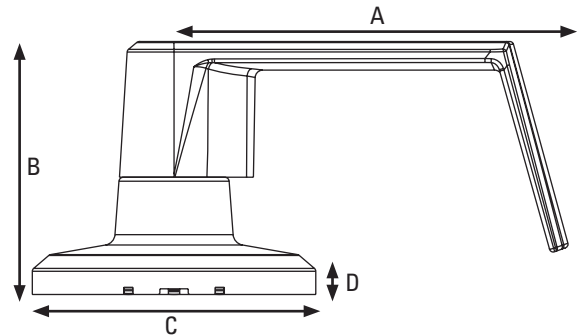
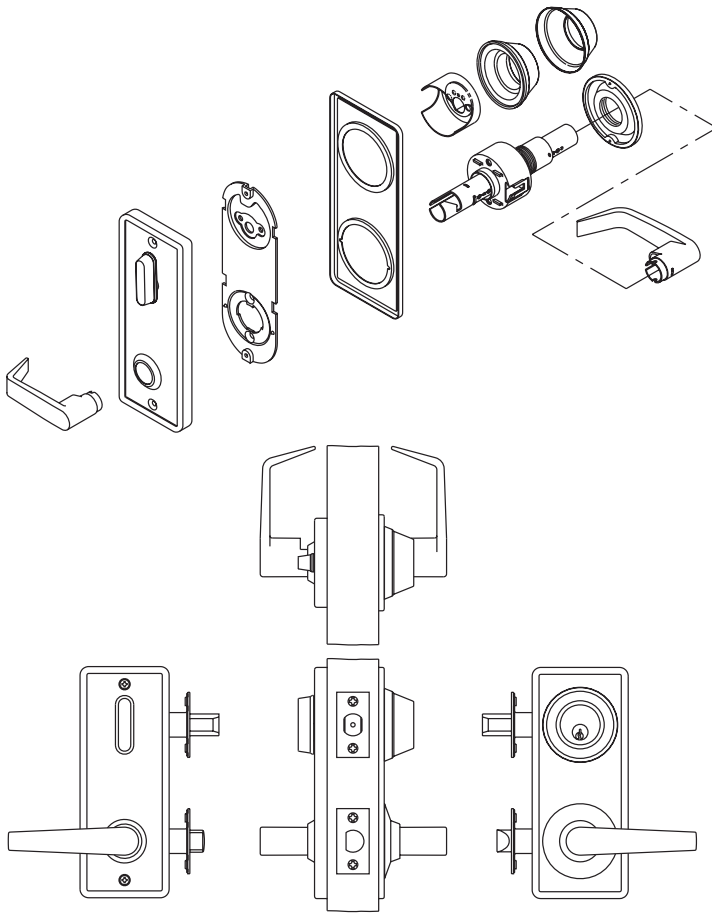
Finishes

BHMA	Description
605	Bright Brass
613	Oil Rubbed Bronze
619	Satin Nickel
626	Satin Chrome

*(613/US10B carries no finish warranty)

MECHANICAL LOCKS

QCI 200 Series Grade 2 Standard-Duty Interconnected Locks



DIMENSIONS				
	A	B	C	D
Sierra	3.96"	2.25"	2.50"	.375"
	100.58mm	57.15mm	63.50mm	9.52mm
Summit	4.0"	2.20"	2.50"	.375"
	101.60mm	55.88mm	63.50mm	9.52mm
Slate	4.47"	4.67"	2.50"	.375"
	113.50mm	118.60mm	63.50mm	9.52mm

Functions	ANSI		Description	Case Qty
QCI230/231* Single-Locking (Passage Lever)	F95		Latch bolt operated by lever from either side. Rotating turn from inside or key from outside extends deadbolt to locked position. Both deadbolt and latch bolt are retracted simultaneously to unlock position by operating inside lever.	6
QCI250/251** Double-Locking (Entry Lever)	F97		Deadlocking latch bolt is operated by lever from either side except when outside lever is made inoperable by locking device inside. When outside lever is locked, deadlocking latch bolt is operated by key outside. Inside locking device is manually operated to unlock outside lever. Rotating turn from inside or key from outside extends deadbolt to locked position. Operating inside lever bolt retracts both deadbolt and deadlocking latch simultaneously. Closing door shall not release locking device inside.	6
QCI285 Indicator (Passage Lever)	—		Latch bolt operated by lever from either side. Rotating turn from inside extends deadbolt to locked position. Both deadbolt and latch bolt are retracted simultaneously to unlock position by operating inside lever. Outside indicator visually shows red closed padlock for locked/in-use, green open door padlock for unlocked/vacant. Emergency key included.	6

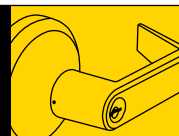
NOTES: *SmartKey available on QCI230 functions only.

**QCI251 available at extended lead time. Consult factory.

How to Order

QCI 200 Series Grade 2

Standard-Duty Interconnected Locks



30	Single-Locking (Passage Lever)
31	Single-Locking SFIC (Passage Lever)
50	Double-Locking (Entry Lever)
51	Double-Locking SFIC (Entry Lever)
85	Indicator (Passage Lever)

605	Bright Brass
613	Oil Rubbed Bronze
619	Satin Nickel
626	Satin Chrome

BF	BEST "F" SFIC
KW	Kwikset "KW"
WE	Weiser "E"
SC	Schlage "C"
GA	Yale "GA"
LA	Sargent "LA"
LC	Less Cylinder

Base Part Number								
Series	Function	Design	Finish	Latch	Strike	Keyway	# Of Pins	Keying
QCI2	31	E	626	NR4	118F	F	6	KD

E	Sierra
M	Summit
A	Slate

Order w/Lock	Lever & Deadbolt Latch
NR4	Narrow Radius 2-3/4
NS4	Narrow Square 2-3/4
NS8	Narrow Square 2-3/8
R4	Radius 2-3/4
S4	Square 2-3/4
S8	Square 2-3/8

Order w/Lock	Lever Latch	Deadbolt Latch
NR8	Narrow Radius 2-3/8	Narrow Radius 2-3/4
R8	Radius 2-3/8	Radius 2-3/4

KD	Keyed Different
KA	Keyed Alike
SK	Special Keying
	-Construction Keyed
	-Construction Master Keyed
	-Maison Keyed
	-Master Keyed
	-Grand Master Keyed
	-Great Grand Master Keyed
ZB	Zero Bitted

Order w/Lock	Lever Strike	Deadbolt Strike
118F	118F	DBS
478S	478S	DBS
FLS	FLS	DBS
FLR	FLR	DBS
FLS2	FLS	FLS
FLR2	FLR	FLR

Example

If you ordered: QCI230 E626 NR4 118F F6 KD

You would get: Grade 2 Interconnect Single Lock, Sierra Lever, Satin Chrome, 2 3/4" Narrow Radius Latches, "T" Strike with Standard Deadbolt Strike, Standard "F" Keyway, Keyed Different.

Performance Features

- Tested to meet Grade 2 specification of 400,000 cycles.
- Heavy-duty torsion springs provide longer performance life and prevent lever sag.
- Concealed mounting screws.
- "Anti-Lockout" feature. The entry function will have a free interior. If the door is locked from the inside, it will unlock with the push of the interior side of the lever only or the turn of the button.
- 1/2" (13mm) latch bolt made of stainless steel black powder metallurgy for enhanced durability and strength.
- Compartmentalized packaging allows for quick and easy installation.



Sierra (E)



Summit (M)



Slate (A)

Certifications



- ANSI/BHMA A156.2 Series – Grade 2
- ANSI A117.1 Accessibility Code (ADA Compliant)
- UL/cUL Listed (3 hours) for "A" label single-door applications (4' x 8') (1.219m x 2.438m)
- UL10C/UBC 7-2 (1997) Positive Pressure Rated
- UL10B Pressure Rated
- California State Reference Code (formerly Title 19 – Fire Marshal)
- Hurricane Compliant – Miami-DADE N.O.A. See page 72 for more details.

Product Specifications

- Handing – All QTL200 Series Levers Locksets are non-handed.
- Door thickness – 1 3/8" - 1 3/4" (35mm-51mm) standard.
- Backset – Universal backset standard, will fit either 2 3/8" or 2 3/4" backsets (60mm-70mm).
- Exposed trim – Pressure cast zinc, plated to match finish designation.
- Strike – Full-lip strike standard (57mm x 44.4mm). Other strike options also available.
- Latch bolt – 1/2" (13mm) steel throw.
- Latch faceplate – 1" x 2 1/4" (25.4mm x 57mm) standard.

Keying

- 6-pin non-IC brass cylinders. 6 or 7 pin SFIC option available. Many keying options available from our factory to include, but not limited to, master keying, grand master keying and construction keying.
- 2 keys per lockset.
- Offered with the following keyway options: BF-BEST "F" SFIC, KW-Kwikset, WE-Weiser, SC-Schlage, GA-Yale, LA-Sargent, & LC-Less Cylinder. Consult factory for other cylinder options.

Warranty

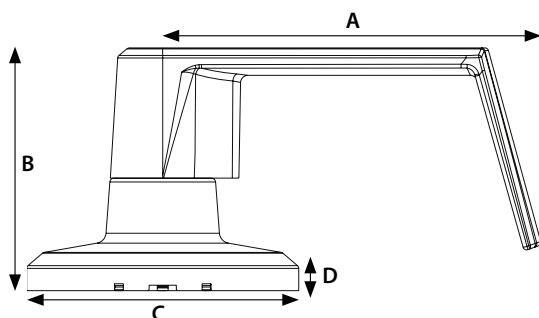
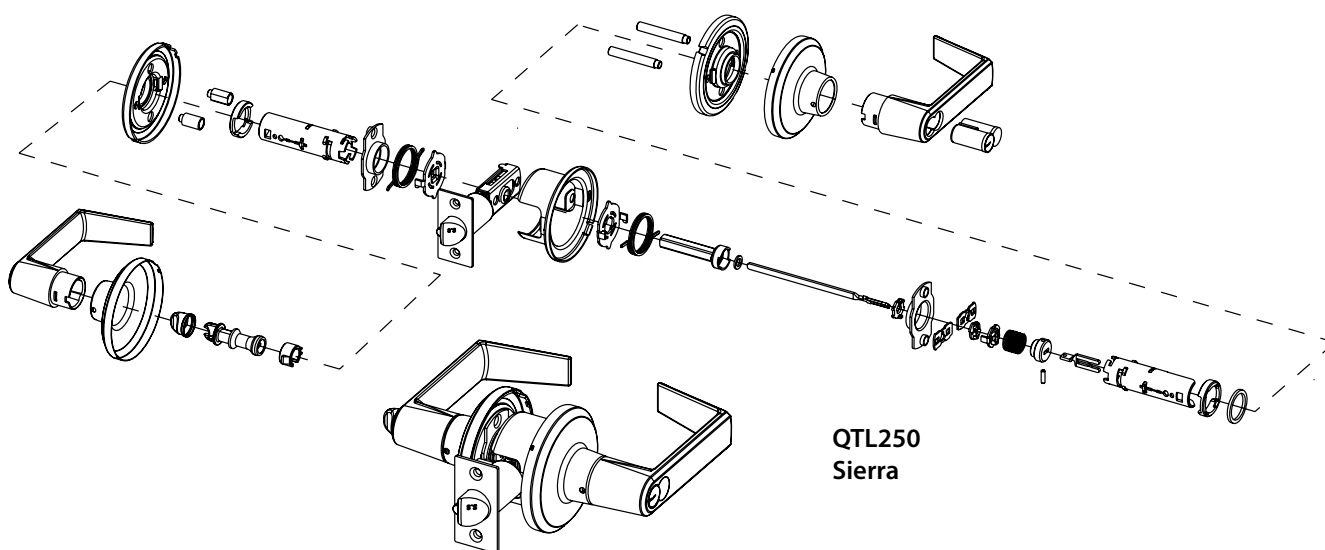
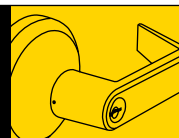
- Lifetime Mechanical and 3-year finish*
- *(613/US10B carries no finish warranty)

Functions

ANSI	Series	Description
—	QTL220	Single Dummy
F75	QTL230	Passage
F76B	QTL240	Privacy
F82	QTL250	Entry/Office
F82	QTL251	Entry/Office SFIC
F84	QTL260	Classroom
F84	QTL261	Classroom SFIC
F86	QTL270	Storeroom
F86	QTL271	Storeroom SFIC

Finishes

BHMA	Description
605	Bright Brass
613	Oil Rubbed Bronze
619	Satin Nickel
625	Bright Chrome
626	Satin Chrome



DIMENSIONS				
	A	B	C	D
Sierra	4.103"	2.635"	2.953"	.443"
	104.21mm	66.93mm	75mm	11.24mm
Summit	4.224"	2.663"	2.953"	.443"
	107.29mm	67.64mm	75mm	11.24mm
Slate	4.488"	2.728"	2.953"	.443"
	114mm	69.30mm	75mm	11.24mm

Functions	ANSI		Description	Case Qty
QTL220 <i>Single Dummy</i>	—		For one side of door. Used for door pull or as matching inactive trim. No mechanical operation. Surface-mounted single dummy trim.	12
QTL230 <i>Passage</i>	F75		Both levers always unlocked and always free for immediate ingress & egress.	10
QTL240 <i>Privacy</i>	F76B		Turn-button locking. Can be opened from outside with small screwdriver. Turning inside lever releases turn-button. Inside lever is always free for immediate egress.	10
QTL250/251 <i>Entry/Office</i>	F82		Unlocked by key from outside when outside lever is locked by turn-button on inside lever. Inside lever always unlocked and available for immediate egress.	10
QTL260/261 <i>Classroom</i>	F84		Outside lever locked or unlocked by key. Inside lever is always unlocked and free for immediate egress.	10
QTL270/271 <i>Storeroom</i>	F86		Outside lever always locked. Entrance by key only. Inside lever always unlocked and free for immediate egress.	10

MECHANICAL LOCKS

How to Order QTL 200 Series Grade 2 Standard-Duty Tubular Locks

20	Single Dummy
30	Passage
40	Privacy
50	Entry/Office
51	Entry/Office SFIC
60	Classroom
61	Classroom SFIC
70	Storeroom
71	Storeroom SFIC

605	Bright Brass
613	Oil Rubbed Bronze
619	Satin Nickel
625	Bright Chrome
626	Satin Chrome

BF	BEST "F" SFIC
KW	Kwikset "KW"
WE	Weiser "E"
SC	Schlage "C"
GA	Yale "GA"
LA	Sargent "LA"
LC	Less Cylinder

Base Part Number								
Series	Function	Design	Finish	Latch	Strike	Keyway	# of Pins	Keying
QTL2	71	E	626	SA	FLR	F	6	KA

Additional Options	
Hurricane Compliant	2nd Finish
H	625

E	Sierra
M	Summit
A	Slate

478S	ANSI 4 7/8" x 1 1/4" Strike
118F	ANSI 1 1/8" x 2 1/4" Strike
FLS	Full Lip Square Corner Strike
FLR	Full Lip 1/4" Radius Corner Strike

625	Bright Chrome
-----	---------------

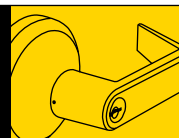
QTL2 LATCH TABLE (New)	
RA	Adjustable Radius
SA	Adjustable Square
NOL	No Latch

KD	Keyed Different
KA	Keyed Alike
SK	Special Keying
	-Construction Keyed
	-Construction Master Keyed
	-Maison Keyed
	-Master Keyed
	-Grand Master Keyed
	-Great Grand Master Keyed
ZB	Zero Bitted

Example

If you ordered: QTL270 E626 SA FLR F6 KA H 625

You would get: Grade 2 Hurricane Compliant Tubular Storeroom Lock, Sierra Lever, Satin Chrome x Bright Chrome, Adjustable Square Latch, Full Lip 1/4" Radius Corner Strike, Standard "F" Keyway, Keyed Alike.



Performance Features

- Tested to meet Grade 1 specification of 250,000 cycles.
- Solid forged housing provides enhanced strength and durability.
- Full 1" (25.4mm) throwbolt with saw-resistant hardened steel roller pin.
- Anti-drill design – two (2) ball bearings inserted to prevent drill attacks.
- ADA thumbturn.
- Compartmentalized packaging allows for quick and easy installation.

Certifications



- ANSI/BHMA A156.5 Series – Grade 1
- ANSI A117.1 Accessibility Code (ADA Compliant)
- UL/cUL Listed (3 hours) for "A" label single-door applications (4' x 8") (1.219m x 2.438m)
- UL10C/UBC 7-2 (1997) Positive Pressure Rated
- UL10B Pressure Rated
- California State Reference Code (formerly Title 19 – Fire Marshal)
- Hurricane Compliant – Miami-DADE N.O.A. See page 72 for more details.



Single Cylinder



Double Cylinder

Product Specifications

- Door range – 1 3/8" (35 mm) to 2" (51 mm).
Service part number 8Q00082 spacer rings required for 1 3/8" doors.
- Backset – 2 3/4" (70mm) square standard.
2 3/8" (60mm) available.
- Exposed trim – Solid forged brass, plated to match finish designation.
- Strike – Standard deadbolt strike 1 1/8" x 2 3/4" (32mm x 70mm).
Other strike options also available.
- Door prep – 2 1/8" (54mm) diameter cross bore.
- Latch bolt – Full 1" (25.4mm) throw with hardened steel roller;
Faceplate – 1 1/8" x 2 1/4" (29mm x 57mm).

Functions

ANSI	Series	Description
E0151	QDB180	Single Cylinder
E0151	QDB181	Single Cylinder SFIC
E0141	QDB182	Double Cylinder
E0141	QDB183	Double Cylinder SFIC
E0171	QDB186	Classroom
E0171	QDB187	Classroom SFIC

Keying

- 6-pin non-IC brass cylinders. 6 or 7 pin SFIC option available. Many keying options available from our factory to include, but not limited to, master keying, grand master keying and construction keying. Small format interchangeable core cylinder also available.
- 2 keys per lockset.
- Offered with the following keyway options: KW-Kwikset, WE-Weiser, SC-Schlage, GA-Yale, LA-Sargent, BF-BEST "F" SFIC, & LC-Less Cylinder.

Finishes

BHMA	Description
605	Bright Brass
613	Oil Rubbed Bronze
619	Satin Nickel
625	Bright Chrome
626	Satin Chrome

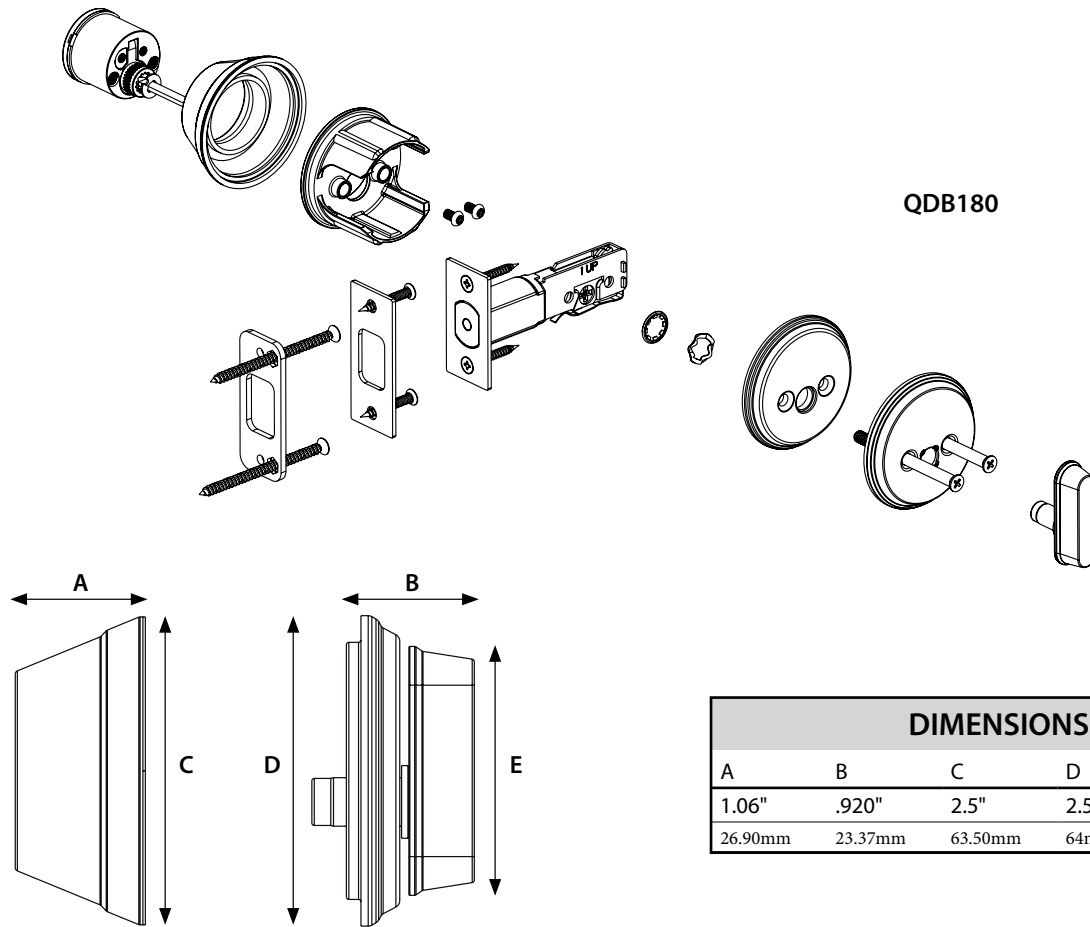
Warranty

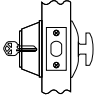
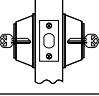
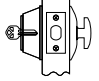
- Lifetime Mechanical and 3-year finish*

*(613/US10B carries no finish warranty)

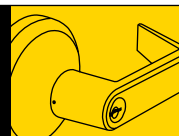
MECHANICAL LOCKS

QDB 100 Series Grade 1 Heavy-Duty Auxiliary Deadbolts



Model/ Series	ANSI		Functions	Description	Case Qty
QDB180/181 <i>Single Cylinder</i>	E0151		Single Cylinder	Deadbolt is operated by a key outside and a thumbturn inside.	12
QDB182/183 <i>Double Cylinder</i>	E0141		Double Cylinder	Deadbolt is operated by a key on both sides.	12
QDB186/187 <i>Classroom</i>	E0171		Classroom	Deadbolt is operated by a key from outside. Turnpiece retracts deadbolt for egress but can not project it.	12

How to Order QDB 100 Series Grade 1 Heavy-Duty Auxiliary Deadbolts



80	Single Cylinder							BF	BEST "F" SFIC
81	Single Cylinder SFIC							KW	Kwikset "KW"
82	Double Cylinder							WE	Weiser "E"
83	Double Cylinder SFIC							SC	Schlage "C"
86	Classroom							GA	Yale "GA"
87	Classroom SFIC							LA	Sargent "LA"
								LC	Less Cylinder

605	Bright Brass						
613	Oil Rubbed Bronze						
619	Satin Nickel						
625	Bright Chrome						
626	Satin Chrome						

Base Part Number								Additional Options	
Series	Function	Finish	Latch	Strike	Keyway	# of Pins	Keying	Hurricane Compliant	
QDB1	83	626	S8	DBS	F	6	KD	H	

QDB1 LATCH TABLE (New)	
NOL	No Latch
NR4	Narrow Radius 2-3/4
NR8	Narrow Radius 2-3/8
NS4	Narrow Square 2-3/4
NS8	Narrow Square 2-3/8
R4	Radius 2-3/4
R8	Radius 2-3/8
S4	Square 2-3/4
S8	Square 2-3/8

KD	Keyed Different
KA	Keyed Alike
SK	Special Keying
	-Construction Keyed
	-Construction Master Keyed
	-Maison Keyed
	-Master Keyed
	-Grand Master Keyed
	-Great Grand Master Keyed
ZB	Zero Bitted

478S	ANSI 4 7/8" x 1 1/4" Strike
DBS	Deadbolt Strike 1 1/8" x 2 3/4" Square
FLS	Full Lip Square Corner Strike
FLR	Full Lip 1/4" Radius Corner Strike

Example

If you ordered: QDB182 626 S8 DBS F6 KD H

You would get: Grade 1 Double Cylinder Auxiliary Deadbolt, Satin Chrome, 2 3/8" Deadbolt Latch Square, Standard Deadbolt Strike, Standard "F" Keyway, Keyed Different, Hurricane Compliant.

Performance Features

- Tested to meet Grade 2 specification of 150,000 cycles.
- Full 1" (25.4mm) throwbolt with saw-resistant hardened steel roller pin.
- Free-spinning cylinder collar prevents against wrench attacks.
- Anti-drill design – Two (2) ball bearings inserted to prevent drill attacks.
- ADA thumbturn.
- Compartmentalized packaging allows for quick and easy installation.
- Available with SmartKey Technology.

Certifications



- ANSI/BHMA A156.12 – 1999 Grade 2
- ANSI A117.1 Accessibility Code (ADA Compliant)
- UL/cUL Listed (3 hours) for "A" label single-door applications (4' x 8') (1.219m x 2.438m)
- UL10C/UBC 7-2 (1997) Positive Pressure Rated
- UL10B Pressure Rated
- Hurricane Compliant – Miami-DADE N.O.A. See page 72 for more details.

Product Specifications

- Door range – 1 3/8" (35mm) to 2" (51 mm).
Service part number 8Q00082 spacer rings required for 1 3/8" doors.
- Backset – 2 3/4" (70mm) square standard. 2 3/8" (60mm) available.
- Exposed trim – Stainless steel with iron forged cylinder guard.
- Strike – Standard deadbolt strike 1 1/8" x 2 3/4" (32mm x 70mm).
Other strike options also available.
- Latch bolt – Full 1" (25.4mm) throw with hardened steel roller.
- Faceplate – 1 1/8" x 2 1/4" (29mm x 57mm) standard.
1" x 2 1/4" (25.4mm x 57mm) faceplate available.

Keying

- 6-pin non-IC brass cylinders. 6 or 7 pin SFIC option available. Many keying options available from our factory to include, but not limited to, master keying, grand master keying and construction keying. Small format interchangeable core cylinder also available.
- 2 keys per lockset.
- Offered with the following keyway options: SMT-SmartKey, KW-Kwikset, WE-Weiser, SC-Schlage, GA-Yale, LA-Sargent, BF-BEST "F" SFIC, & LC-Less Cylinder.

Warranty

- Lifetime Mechanical and 3-year finish*

*(613/US10B carries no finish warranty)



Single Cylinder



Double Cylinder



QDB285 Indicator



QDB288 Key Control

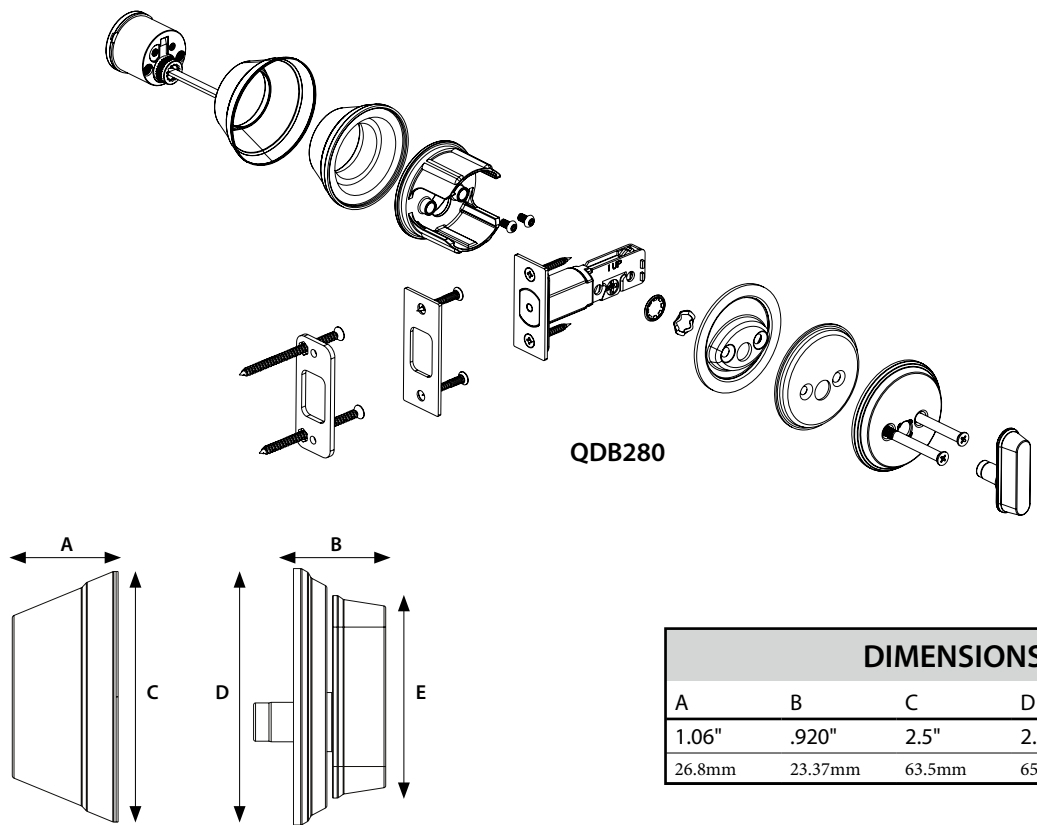
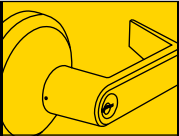
Functions

ANSI	Series	Description
E0152	QDB280	Single Cylinder
E0152	QDB281	Single Cylinder SFIC
E0142	QDB282	Double Cylinder
E0142	QDB283	Double Cylinder SFIC
E0193	QDB284	Inside Turnbolt
—	QDB285	Indicator
E0172	QDB286	Classroom
E0172	QDB287	Classroom SFIC
E0152	QDB288	Key Control

Finishes

BHMA	Description
605	Bright Brass
613	Oil Rubbed Bronze
619	Satin Nickel
625	Bright Chrome
626	Satin Chrome

QDB
200 Series Grade 2
Standard-Duty Auxiliary Deadbolts



QDB280

DIMENSIONS				
A	B	C	D	E
1.06"	.920"	2.5"	2.56"	2.02"
26.8mm	23.37mm	63.5mm	65mm	51.31mm

Model/ Series	ANSI		Description	Case Qty
QDB280/281 <i>Single Cylinder</i>	E0152		Deadbolt is operated by a key outside and a thumbturn inside.	12
QDB282/283 <i>Double Cylinder</i>	E0142		Deadbolt is operated by a key on both sides.	12
QDB284 <i>Inside Turnbolt</i>	E0193		Deadbolt is operated by a thumbturn inside. <u>There is no trim on the other side.</u>	20
QDB285 <i>Indicator</i>	—		Deadbolt is operated by turn inside. Occupancy indicator plate on outside. Indicator visually shows red closed padlock for locked/in-use, green opened padlock for unlocked/vacant. Emergency key included.	12
QDB286/287* <i>Classroom</i>	E0172		Deadbolt operated by key from outside. Thumbturn retracts deadbolt for egress but cannot project it.	12
QDB288† <i>Key Control</i>	E0152		Deadbolt operated by either tenant or control key from outside. Thumbturn on inside projects and retracts deadbolts.	12

NOTES:
 *Classroom indicator deadbolts available in 626 finish at standard lead times. Consult factory for lead times on alternative finishes.
 †Key control deadbolt available with SmartKey cylinders only.